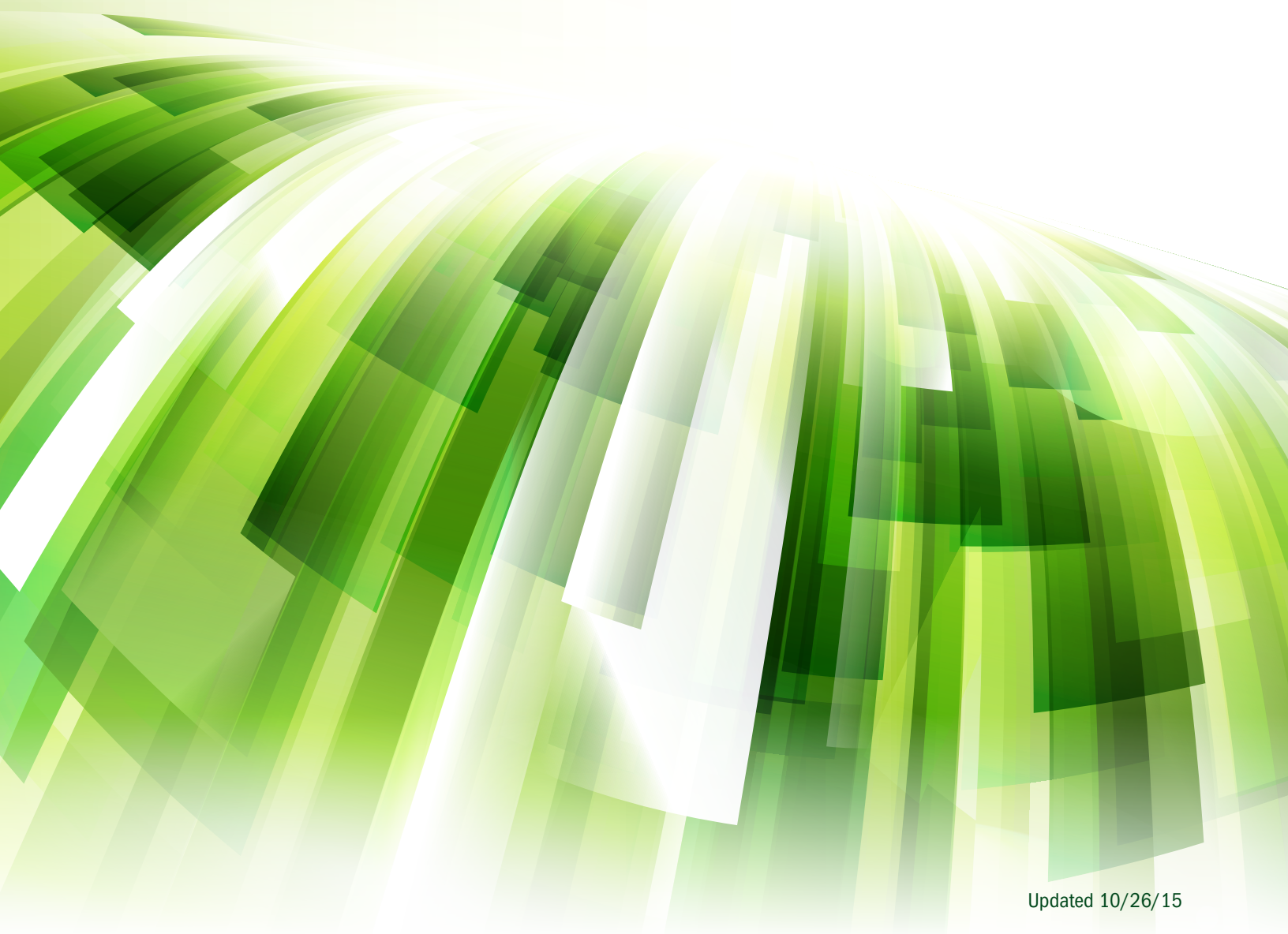


2016

Pensions & Investments
Editorial | Content Solutions | Conferences

CALENDAR



Updated 10/26/15

Pensions & Investments

2016 CALENDAR

Issue Date Print

Content Solutions & Other

Events and Bonus Distribution

JANUARY

11	<ul style="list-style-type: none"> ◆ Money Manager M&A <p>Issue Close: Dec. 29</p>		
25	<ul style="list-style-type: none"> ◆ Special Report: Asia ◆ Digital: Riskwatch* <p>Issue Close: Jan. 13</p>	<p>Target Date Funds Round Table Sponsorship Close: Nov. 30</p>	<ul style="list-style-type: none"> - MFA Network, Jan. 25-27, Miami - NICSAs, Jan. 31- Feb. 2, Hollywood, Fla.

FEBRUARY

8	<ul style="list-style-type: none"> ◆ P&I 1,000 Largest U.S. Retirement Funds <p>Issue Close: Jan. 27</p>	<p><i>Signet AdStudy</i></p>	<ul style="list-style-type: none"> - P&I Next Generation Fixed Income, Feb. 9, Chicago; Feb. 11, New York
22	<ul style="list-style-type: none"> ◆ Pension Risk Transfer ◆ Digital: 2015's Top-Performing Managers* <p>Issue Close: Feb. 10</p>		<ul style="list-style-type: none"> - CBOE Risk Management Conf., Feb. 29- March 2, Bonita Springs, Fla.

MARCH

7	<ul style="list-style-type: none"> ◆ 100 Largest Corporate Defined Contribution Plans ◆ Digital: Tradewatch* <p>Issue Close: Feb. 24</p>	<p>Target-Date Supplement Sponsorship Close: Dec. 4</p>	<ul style="list-style-type: none"> - P&I East Coast Defined Contribution Conference, March 6-8, Miami - PREA Spring Conference, March 8-9, Boston
21	<ul style="list-style-type: none"> ◆ Eddy Awards <p>Issue Close: March 9</p>	<p>Liability Driven Investing Round Table Sponsorship Close: Jan. 25</p>	

APRIL

4	<ul style="list-style-type: none"> ◆ Environmental, Social, Governance Investing ◆ Defined Contribution Service Providers <p>Issue Close: March 23</p>	<p>Exchange Traded Funds Round Table Sponsorship Close: Feb. 8</p>	<ul style="list-style-type: none"> - P&I 401(k) Summit, April 5, San Francisco; April 7, Dallas; April 12, Chicago; April 14, New York
18	<ul style="list-style-type: none"> ◆ Corporate Balance Sheet ◆ Digital: Riskwatch* <p>Issue Close: April 6</p>	<p>Trends in Emerging Markets Supplement Sponsorship Close: Jan. 29</p>	

2016 CALENDAR

Issue Date

Print

Content Solutions & Other

Events and Bonus Distribution

MAY

2	<ul style="list-style-type: none"> ◆ Infrastructure <p>Issue Close: April 20</p>	Smart Beta Supplement Sponsorship Close: Feb. 12	<ul style="list-style-type: none"> - AIMSE Annual, May 1-3, Aventura, Fla. - P&I Canadian Risk Conference, May 3, Vancouver; May 5, Toronto - SALT, May 10-13, Las Vegas
16	<ul style="list-style-type: none"> ◆ Health Savings Accounts ◆ Digital: Q1 Top-Performing Managers* <p>Issue Close: May 4</p>		<ul style="list-style-type: none"> - P&I Alternatives in DC Plans Conf., May 19, New York - NCPERS Annual Conf., May 15-19, San Diego - GFOA Annual Conference, May 22-26, Toronto
30	<ul style="list-style-type: none"> ◆ Largest Money Managers <p>Issue Close: May 18</p>	Signet AdStudy	

JUNE

13	<ul style="list-style-type: none"> ◆ Insourcing and Outsourcing ◆ Digital: Tradewatch* <p>Issue Close: June 1</p>	Multiasset Strategies Supplement Sponsorship Close: March 25	- P&I Global Future of Retirement, June 12-14, Washington
27	<ul style="list-style-type: none"> ◆ GFOR Conference Highlights <p>Issue Close: June 15</p>	Active/Passive Supplement Sponsorship Close: April 8	

JULY

11	<ul style="list-style-type: none"> ◆ Subadvisers <p>Issue Close: June 29</p>		
25	<ul style="list-style-type: none"> ◆ Commodities ◆ Digital: Riskwatch* <p>Issue Close: July 13</p>	Signet AdStudy	

AUGUST

8	<ul style="list-style-type: none"> ◆ Defined Contribution Money Managers ◆ Digital: Q2 Top-Performing Managers* <p>Issue Close: July 27</p>	Signet AdStudy	
22	<ul style="list-style-type: none"> ◆ (To be determined) <p>Issue Close: Aug. 10</p>	Fixed Income Supplement Sponsorship Close: June 3	

2016 CALENDAR

Issue Date	Print	Content Solutions & Other	Events and Bonus Distribution
------------	-------	---------------------------	-------------------------------

SEPTEMBER

5	<ul style="list-style-type: none"> ◆ P&I Towers Watson MegaFunds ◆ Digital: Tradewatch* <p>Issue Close: Aug. 24</p>		<ul style="list-style-type: none"> - P&I Retirement Income Summit, Sept. 13, Chicago; Sept. 15, New York
19	<ul style="list-style-type: none"> ◆ Hedge Funds and Funds of Funds <p>Issue Close: Sept. 7</p>	<p>Real Assets Supplement Sponsorship Close: July 1</p>	<ul style="list-style-type: none"> - NAGDCA Annual Meeting, Sept. 18-21, Denver - P&I Canadian Alternatives, Sept. 29, Toronto

OCTOBER

3	<ul style="list-style-type: none"> ◆ Real Estate Investment Managers <p>Issue Close: Sept. 21</p>		<ul style="list-style-type: none"> - P&I Pension Settlements Conference, Oct. 6, Dallas; Oct. 11, Chicago; Oct. 13, New York
17	<ul style="list-style-type: none"> ◆ Cyber Security and DC Plans ◆ Digital: Riskwatch* ◆ Digital: Digital: Most-Used Mutual Funds by DC Plans* <p>Issue Close: Oct. 5</p>	<p>Trends in DC Supplement Sponsorship Close: July 29</p> <p><i>Signet AdStudy</i></p>	<ul style="list-style-type: none"> - P&I West Coast Defined Contribution Conference, Oct. 23-25, San Diego - PREA Real Estate, Oct. 24-26, Beverly Hills, Calif.
31	<ul style="list-style-type: none"> ◆ P&I Towers Watson MegaManagers ◆ Innovators <p>Issue Close: Oct. 19</p>	<p>Outsourcing Supplement Sponsorship Close: Aug. 12</p>	<ul style="list-style-type: none"> - P&I Global Pension Symposium, Nov. 8-9, Tokyo

NOVEMBER

14	<ul style="list-style-type: none"> ◆ Passive and ETF Managers ◆ Digital: Q3 Top-Performing Managers* <p>Issue Close: Nov. 2</p>	<p>Alternatives in DC Supplement Sponsorship Close: Aug. 26</p>	
28	<ul style="list-style-type: none"> ◆ Consultants <p>Issue Close: Nov. 16</p>		<ul style="list-style-type: none"> - PAICR, Nov. 17-18, New York

DECEMBER

12	<ul style="list-style-type: none"> ◆ Best Places to Work ◆ Digital: Tradewatch* <p>Issue Close: Nov. 30</p>	<p>Trends in Global Investing Supplement Sponsorship Close: Sept. 23</p>	
26	<ul style="list-style-type: none"> ◆ Investment Outlook <p>Issue Close: Dec. 14</p>		

Editorial information listed in the 2016 P&I Editorial Calendar was accurate, to the best of our Editor's knowledge, at the time this schedule was prepared. However, changes may be made in these scheduled dates for reasons beyond our Editor's control.

* Digital special reports will appear on pionline.com only

Updated 10/26/15